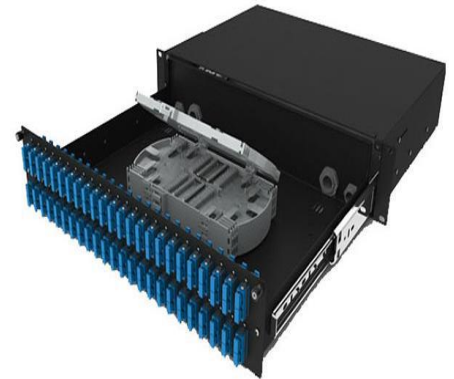


48 Ports Fiber Optic Patch Panel

48 ports Sliding Patch Panel is suitable for SC/LC and E2000 panel and can be ordered for ports such as ST or FC type. The panel can also be pre-loaded completely with the required adapter and simple management kit. The sliding system in its basic form can be supplied with or without adapters. The tray is locked in place and has two plastic catches for simple installation. When fully extended the tray is designed to lower at 45 degrees or move the tray to the side and locks at 10 degrees only. It fully provides a perfect working flat form for simple installation and easy maintenance

Features

- Recessed Panel and Adapters option with better bend radius
- No exposed screws
- 45 degrees working angle
- Multi-functional rear cable entry options
- Panel and Rack number identification labels
- 4 Cable Entries (2XPG16, 2XPG13.5)



Applications

- Telecommunication networks
- FTTH
- LAN,WAN ,CATV networks
- Active device termination

Specification

ELEMENT	48 Port
U Size	2U (44.4mm)
Width	483mm
Depth	200mm
Weight	2.8kgs fully
Packaged Dimensions	520mm W X 310mm H x 222mm D
IP Rating	IP20
Adapter Options	SC /FC/ST/LC
Number of ports	48
Cable Entry 20mm	2
Mounting adjustment range	50mm
Material	Cold Rolled Steel
Material thickness	1.2mm
Material coating	Powder coating
Colour	Black RAL 9004
Operating Temperature	-40°C to + 50°C
Compliant to	RoHS, Reach / SVHC
Designed in accordance	TIA/EIA 568.C, ISO/IEC 11801, EN 50173,IEC 60304, IEC

Ordering information

Fiber Type	Part Number
FC	AN- 48PP- 2UFC
LC	AN-48- 2ULC
ST	AN- 48PP- 2UST
SC	AN- 48PP- 2USC